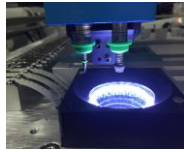


CHM-T48VB PICK AND PLACE MACHINE

- * Total **58 feeders** (Left and right), put more tapes
- * High accuracy mounting with 2 Vision cameras
- * XY Axis motor Closed-loop control
- * Embedded Linux system
- * Industry level high reliable mainboard
- * PC in build, no need external PC
- * High quality Juki Nozzles
- * Multi PCB assembly support
- * All-in-one Machine
- * Cut tape/ bulk IC/ IC tray support



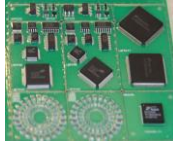
CCD vision camera



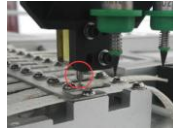
Touch screen/USB mouse



closed-loop control



Different kinds of material



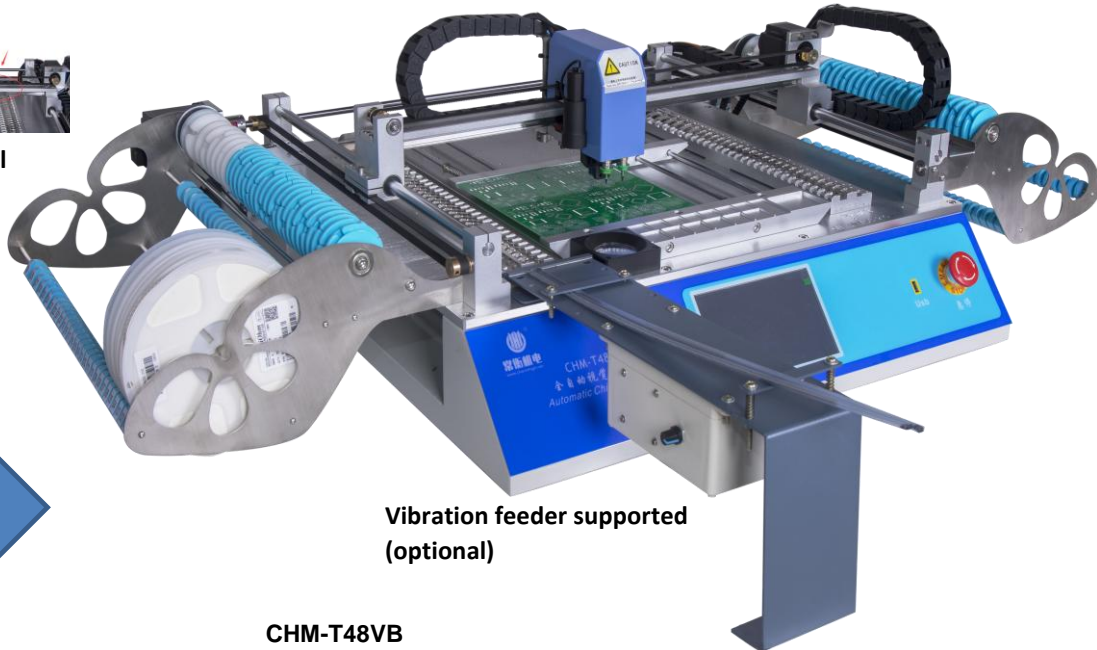
Pull pin auto reset



Support IC tray



X Axis square rail



Vibration feeder supported (optional)

Best Sell Model

Model	CHM-T48VB
XYZ Axis travel	510mm(X)×460mm(Y)×15mm(Z)
PCB max size	345mm(L)×355mm(W); highest component: 5mm
Support components	0402/0603~5050/SOT/SOP/QFP/QFN/BGA, etc. (resistor/capacitor/diode/triode/LED/IC, etc.) Highest component 5mm
Mounting speed	Without vision:6000cph; With Vision:4000cph
Precision	±0.025mm
Placement head	2 heads
PCB thickness	0.6-3.5mm
Transmission system	Synchronous belt+polished rod
Feeding system	58 feeders (width 8/12/16/24mm); 14pcs front bulk IC; Custom IC tray 10pcs
Demension	1320mm(L)×705mm(W)×335mm(H)
Vision detection	Double camera (up & down)
Motor control	XY Axis stepper motor with encoder closed-loop control, never lose step
Components leakage detection	Z Axis origin detection; Vision detection; Vacuum detection
Main board	High-reliability industry motherboard
Touch Screen	7 inches industry LCD screen
Operation system	Embedded Linux system
Air pump	Built-in 2 vacuum pumps
Pull pin needle auto return	Yes, to avoid pull pin broke
Support software	Altium designer, Protel99SE, PADS, Kicad, Eagle, Cadint, Cadence Orcad, Cadence Allegro, PROTEUS...etc
Power supply	AC220V 50Hz / AC110V 60Hz
Power	250W
Net weight	55Kg